




Automated
orientation of
perforated and marked
tubes before the
bending operation

 **IQ tubeorientation**


for
tube bending machines



Automated
orientation of
perforated and
marked tubes



Simplification
of the manual
feeding process



Avoidance of errors
due to automated
orientation of
the tubes



Simplification and
cost reduction in
automated feeding
processes

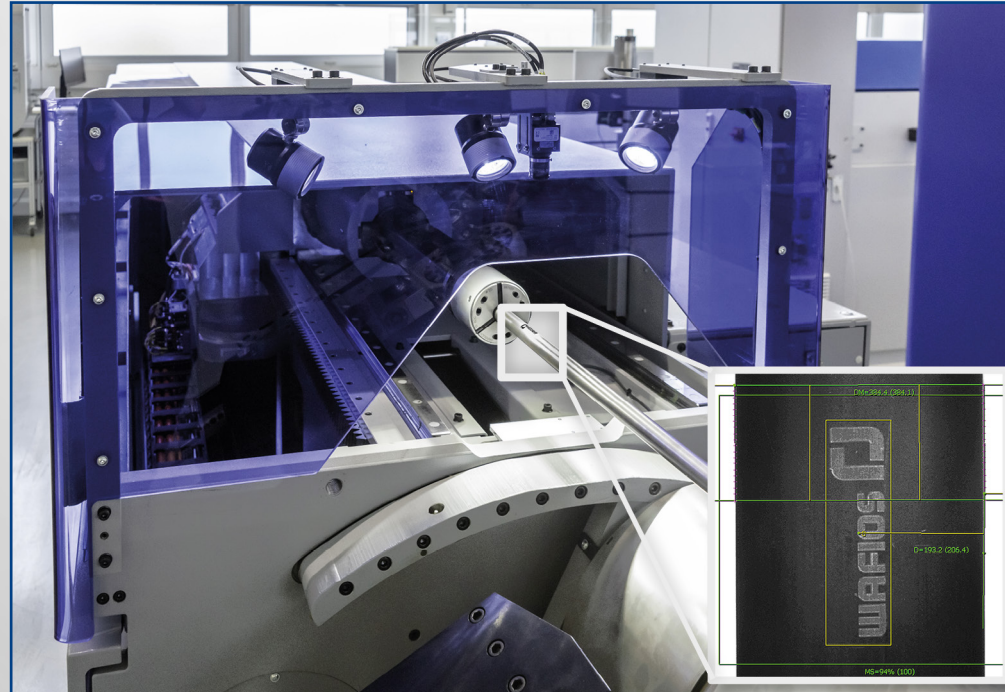


Quality increase

Situation

- Bending of perforated tubes require an exact positioning of the tubes before the bending operation
- Normally, an experienced machine operator has to adjust the position of every single tube before the bending operation can be started
- This procedure is very time consuming and error-prone
- In addition, an automated feeding system, e. g. utilizing a robot, is very cost intense

Solution



- *iQtubeorientation* enables the automatic orientation of marked tubes with punched-in holes or inside weldseams in the collet
- The tube can be inserted in the collet via a feeding unit, regardless of its position
- While it is clamped in the collet, the tube is oriented and positioned for the bending process by means of a camera
- This function is also externally available on the magazine

Requirements

- Preliminary verification of function by means of a parts drawing