

Wire Straightening and Cutting Machine for the Production of Straightened Rods Made of Round Wire



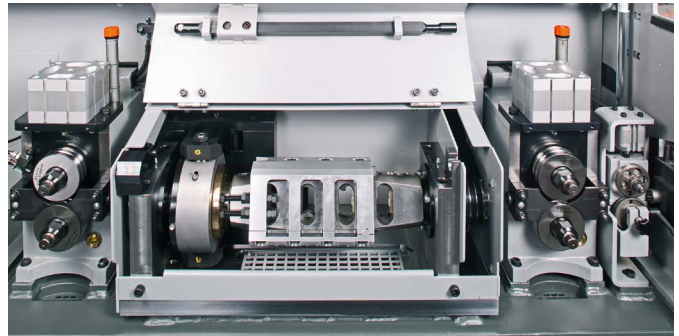
R 36

R 36

▼ Infeed with Manually Adjustable Straightening Rotor (standard)



▼ Servo-Adjustable Straightening Rotor (option)



Our Accomplishments for your Benefit

- More powerful while offering even more operating convenience
- Minimized set-up times
- Optimized and language-neutral operator guidance
- Several partial use of the tools of previous models
- Improved working conditions due to service instructions, electronically stored operating instructions

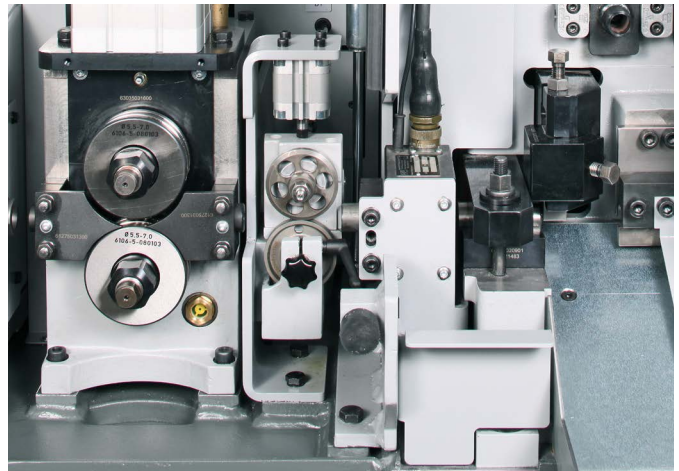
Design Features

- New design combined with reliable technology
- Optimized feed and rotor technology
- Reduced noise emission due to the use of state-of-the-art materials
- Comfortable and language-neutral operation via SIEMENS Comfort panel
- Chamfering (option)
- Optimum protection against soiling due to encapsulation of feed modules and rotor, channel for collecting lubricants and dirt, optional extraction unit
- Room for optional test probes in combination with measuring wheel
- Creative solutions for storing tools and operating tools
- Improved results in the lower wire diameter range due to shortened distance between tension rolls and cut

Operation

- Reduced set-up times due to ergonomic access to all tools
- User-friendly color Touchscreen with masks e, g. *ROD EASY* mask: A selection of fixed wire diameter and wire type is stored. The values for the straightening ratio and the pressure of the feed rollers are applied automatically. In addition, the Operator can store their own types of wire. *MAINTENANCE* mask: Monitoring of maintenance intervals.

▼ Length measuring device



Quality, Reliability and Efficiency – WAFIOS Wire Straightening and Cutting Machines

New Definition of Productivity

WAFIOS R machines have been designed for the production of straightened and cut-off rods. They provide new technical solutions for increasing your output and optimizing costs.

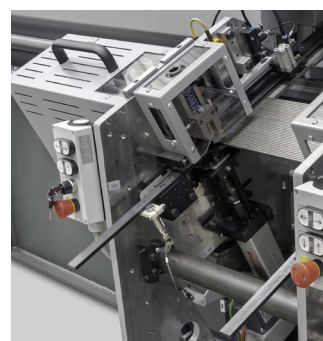
The standard equipment of these machines includes 4 drives. As an option, the machines can be fitted with an additional push roller pair and a straightening system with a larger spacing to use the machines also in the larger diameter range.

Further options are compact rotors and a freely selectable number of cuts to increase the output, spray oil device, interts for minimizing length tolerances as well as different extension versions for increasing the machines efficiency.

Moreover, tools and devices for processing profiles are also available if required.



▲ Collecting tray



▲ Chamfering EBF

Quality

For more than 125 years, the name of WAFIOS has been synonymous with highest quality, safety standards, and technical innovations in the German machine manufacturing industry.

Reliability

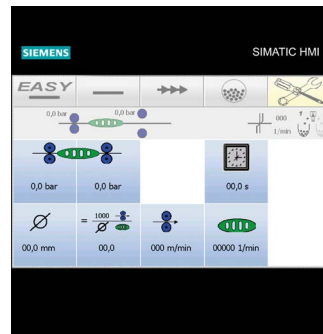
Strict quality controls, state-of-the-art production systems, and many years of experience guarantee that your investment is safe in our hands. Our global service network ensures high availability of WAFIOS machinery.

Cost efficiency

High production output and a long service life will save money and shorten the amortization time of your investment.



▲ Graphical operator guidance



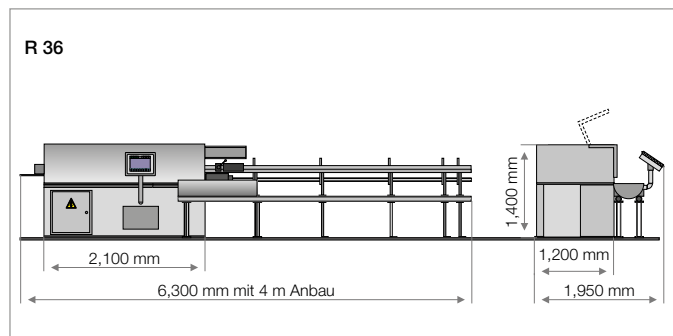
▲ Color Touchscreen

Technical Data	R 36	R 36 S	R 36***																							
Feed speed: [m/min]	5 – 180	5 – 180	5 – 180																							
Wire Ø** [mm] <ul style="list-style-type: none"> ■ 400 – 800 N/mm²: ■ 800 – 1,200 N/mm²: ■ 1,200 – 1,600 N/mm²: 	<table border="1"> <tr> <th>(Standard)</th> <th>(B-Version)</th> </tr> <tr> <td>1.5 – 7.0</td> <td>3.0 – 8.0</td> </tr> <tr> <td>2.0 – 6.5</td> <td>3.5 – 7.0</td> </tr> <tr> <td>2.0 – 6.0</td> <td>3.5 – 6.5</td> </tr> </table>	(Standard)	(B-Version)	1.5 – 7.0	3.0 – 8.0	2.0 – 6.5	3.5 – 7.0	2.0 – 6.0	3.5 – 6.5	<table border="1"> <tr> <th>(1. Rotor)</th> <th>(2. Rotor)</th> <th>(3. Rotor)</th> </tr> <tr> <td>1.5 – 3.5</td> <td>3.0 – 6.0</td> <td>2.0 – 5.0</td> </tr> <tr> <td>2.0 – 3.0</td> <td>3.5 – 5.5</td> <td>2.5 – 4.5</td> </tr> <tr> <td>—</td> <td>—</td> <td>—</td> </tr> </table>	(1. Rotor)	(2. Rotor)	(3. Rotor)	1.5 – 3.5	3.0 – 6.0	2.0 – 5.0	2.0 – 3.0	3.5 – 5.5	2.5 – 4.5	—	—	—	<table border="1"> <tr> <td>2.5 – 7.0</td> </tr> <tr> <td>3.0 – 6.5</td> </tr> <tr> <td>3.0 – 6.0</td> </tr> </table>	2.5 – 7.0	3.0 – 6.5	3.0 – 6.0
(Standard)	(B-Version)																									
1.5 – 7.0	3.0 – 8.0																									
2.0 – 6.5	3.5 – 7.0																									
2.0 – 6.0	3.5 – 6.5																									
(1. Rotor)	(2. Rotor)	(3. Rotor)																								
1.5 – 3.5	3.0 – 6.0	2.0 – 5.0																								
2.0 – 3.0	3.5 – 5.5	2.5 – 4.5																								
—	—	—																								
2.5 – 7.0																										
3.0 – 6.5																										
3.0 – 6.0																										
Shortest cutting lengths with flat wire guide [mm] <ul style="list-style-type: none"> ■ with length measuring unit: ■ with release head: ■ with fixed stop: 	<table border="1"> <tr> <td>100</td> </tr> <tr> <td>250</td> </tr> <tr> <td>25 – 250</td> </tr> </table>	100	250	25 – 250	<table border="1"> <tr> <td>100</td> </tr> <tr> <td>25 – 250</td> </tr> </table>	100	25 – 250	<table border="1"> <tr> <td>100</td> </tr> <tr> <td>25 – 250</td> </tr> </table>	100	25 – 250																
100																										
250																										
25 – 250																										
100																										
25 – 250																										
100																										
25 – 250																										
Max. cuts per minute: <ul style="list-style-type: none"> ■ with fixed stop (option): 	<table border="1"> <tr> <td>160 / 320*</td> </tr> <tr> <td>276</td> </tr> </table>	160 / 320*	276	<table border="1"> <tr> <td>160 / 320*</td> </tr> <tr> <td>276</td> </tr> </table>	160 / 320*	276	<table border="1"> <tr> <td>160 / 320*</td> </tr> <tr> <td>276</td> </tr> </table>	160 / 320*	276																	
160 / 320*																										
276																										
160 / 320*																										
276																										
160 / 320*																										
276																										
Space requirement without extension (l × w × h): [mm]	2,100 × 1,200 × 1,400	2,100 × 1,200 × 1,400	2,100 × 1,200 × 1,400																							

* Freely selectable number of cuts (option)

** Cold-rolled reinforcing steel, measured across the ribs

*** Servo-Adjustable Straightening Rotor (option)



WAFIOS AG

Silberburgstraße 5
 72764 Reutlingen, Germany
 Phone +49 7121 146-0
 Fax +49 7121 146-250
 sales@wafios.de
 www.wafios.com

Precision Machinery for Wire and Tube